



# GMT MONTHLY MEMBERSHIP PROGRESS REPORT

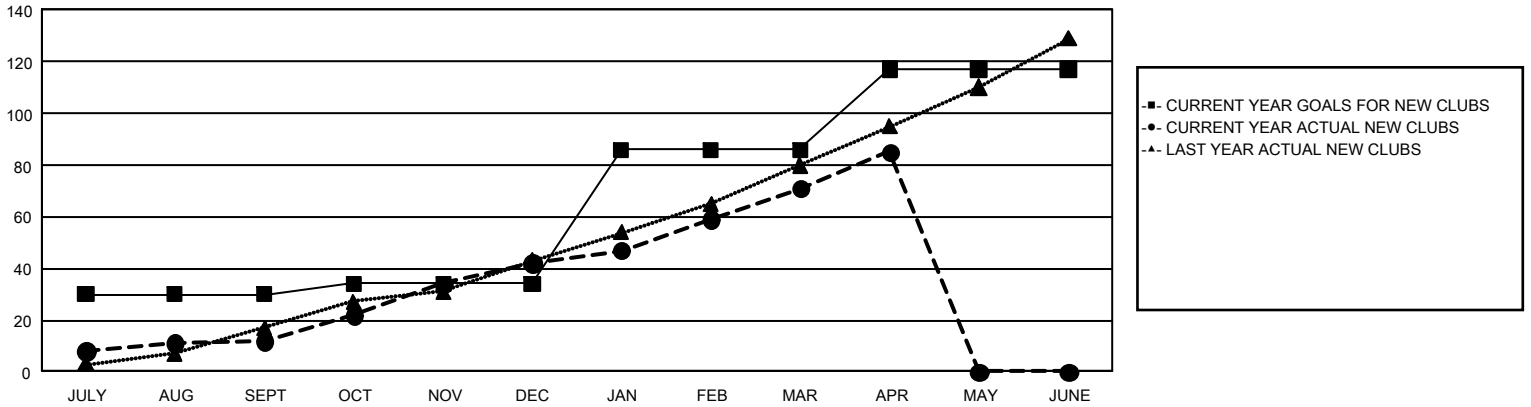
## GAT Constitutional Area 8

Results as of: 4/30/2026

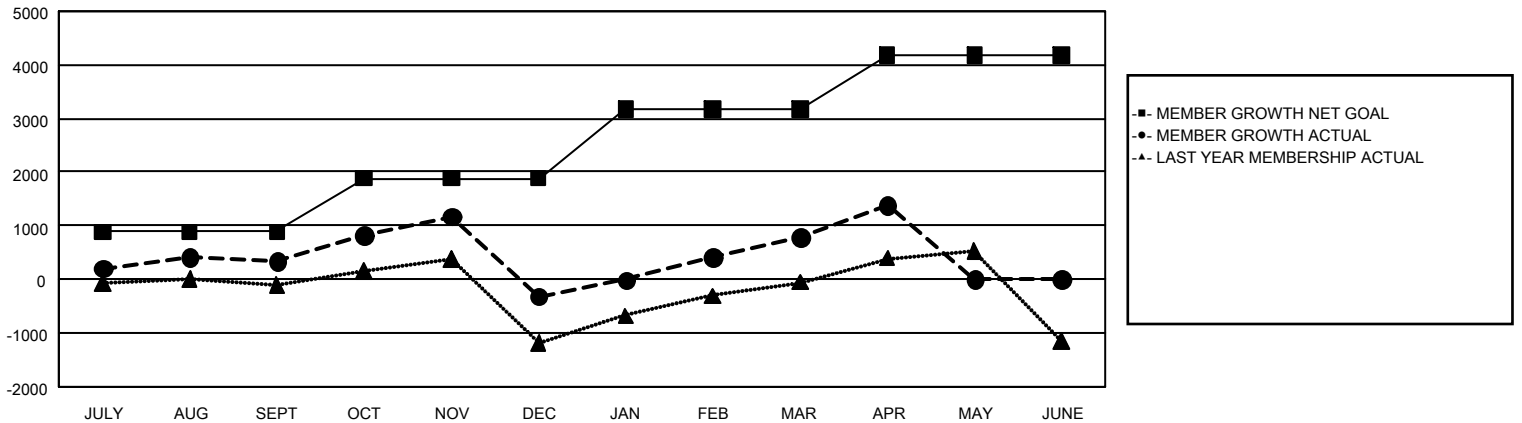
REPORT DOES NOT INCLUDE CLUBS IN UNDISTRICTED AREAS.

Clubs				Members			
RESULTS FOR 2025-2026				RESULTS FOR 2025-2026			
QUARTER	NEW CLUB GOAL	NEW CLUBS	DROPPED CLUBS	QUARTER	MEMBER GROWTH NET GOAL	MEMBER GROWTH ACTUAL	DROPPED MEMBERS ACTUAL (including transfers)
JULY/AUG/SEPT	30	12	6	JULY/AUG/SEPT	886	1,844	1,222
OCT/NOV/DEC	4	30	59	OCT/NOV/DEC	998	2,296	2,698
JAN/FEB/MAR	52	29	11	JAN/FEB/MAR	1,289	2,131	725
APR/MAY/JUNE	31	14	2	APR/MAY/JUNE	1,013	932	269

**GOALS AND ACTUAL NEW CLUBS CUMULATIVE**



**GOALS AND ACTUAL MEMBERS CUMULATIVE**



<b>DROPPED CLUBS: 77</b>	977 CLUBS OF 1,717 ADDED 1 OR MORE NEW MEMBERS	<b><u>GENDER DISTRIBUTION</u></b> MALE                    21,835 (57.68%) FEMALE                   15,989 (42.24%)
<b><u>DROPPED MEMBERS</u></b> DECEASED                    109 CLUB CANCELLED               988 OTHER                            3,805 <hr/> TOTAL                            4,902	<a href="#">CLICK HERE FOR CUMULATIVE MEMBERSHIP DATA</a>	TOTAL FAMILY UNIT MEMBERS                    4,936  FAMILY MEMBERS PAYING HALF DUES                    2,915